



MODEL: ER32L100
Lithium Thionyl Chloride
(Li-SOCl₂) Battery

ELECTRICAL CHARACTERISTICS

(typical values for cells stored for one year or less, at 25°C)

Nominal capacity	1.70 Ah
(at 1.0 mA, +25°C, 2.0V cut off. The capacity restored by the cell varies according to current drain, temperature and cut off voltage.)	
Rated voltage	3.6 V
Maximum recommended continuous current	10 mA
(To get 50% of the nominal capacity at +25°C with 2.0V cut off. Higher currents possible. Consult OmniCel.)	
Maximum pulse current capability	50mA
Rated 1 sec. pulse capability(to 3V)	20mA
Pulse capability varies according to pulse characteristics (frequency and duration), temperature, cell history (storage conditions prior to usage) and the application's acceptable minimum voltage.	
Storage (recommended)	30°C max
(for more severe condition consult OmniCel.)	
Operating temperature range	-55°C / +85°C
(Operation at temperature different from ambient may lead to reduced capacity and lower voltage plateau readings.)	

KEY FEATURES

- ✓ High and stable operating voltage
- ✓ High minimum voltage during pulsing
- ✓ Low self discharge rate (less than 1% after 1 year of storage at +25°C)
- ✓ Stainless steel container
- ✓ Hermetic glass-to-metal sealing
- ✓ Non-flammable electrolyte
- ✓ Non restricted for transport
- ✓ Compliant with IEC 86-4 safety standard and EN 50020 intrinsic safety

UL Underwriters Laboratories (UL) Component Recognition (File Number MH28717)

MAIN APPLICATIONS

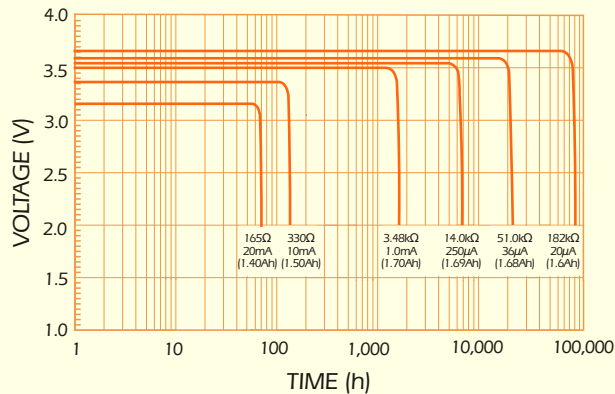
- ✓ Utility metering
- ✓ Alarms and security devices
- ✓ Memory back-up
- ✓ Tracking systems
- ✓ Automotive electronics
- ✓ Professional electronics ... etc.

WARNING:

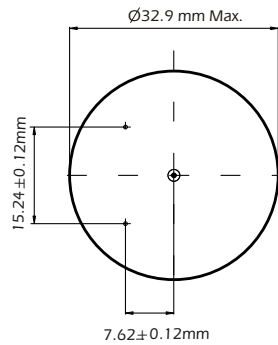
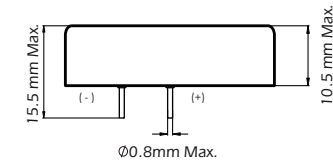
Fire, explosion and severe burn hazard. Do not recharge, crush, disassemble, heat above 212°F (100°C), incinerate, or expose contents to water.

Note: Any representations in this data sheet concerning performance are for informational purpose only and are not construed as warranties, either expressed or implied, of future performance.

DISCHARGE CHARACTERISTICS @ + 25°C



ER32L100

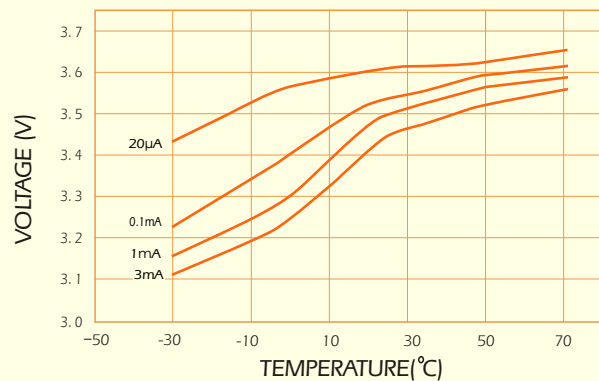


AVAILABLE TERMINATIONS

Suffix-/P

Tinned Nickel Pins

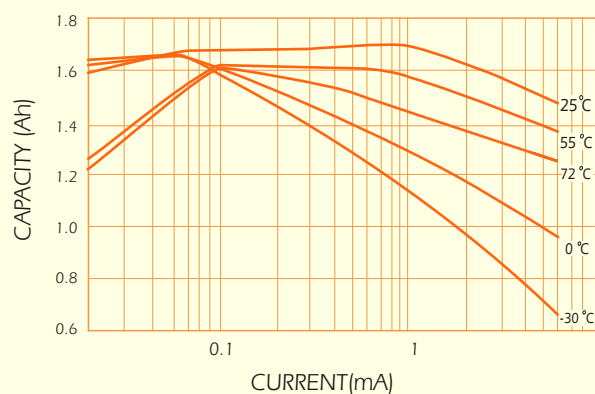
VOLTAGE VS. TEMPERATURE



PHYSICAL CHARACTERISTICS

- Diameter (max) 32.9 mm (1.295")
- Height (max) 10.5 mm (0.394")
- Typical weight 24 g (0.847oz)

CAPACITY VS. CURRENT



STORAGE CHARACTERISTICS

